

# River maintenance and flood prevention - April 2024 to March 2025

River Tat and River Wensum (Fakenham, Upper and Middle) - Spring 2024

## What We Do

The Environment Agency inspect and maintain rivers and flood defences. We target this work to reduce the risk of flooding to people and property.

Landowners are responsible for maintaining rivers. You can find more information on rights and responsibilities by visiting:

<https://www.gov.uk/guidance/owning-a-watercourse>

Our maintenance work keeps rivers and flood defences working together to prevent flooding. Regular maintenance helps our flood defences last longer, which saves money.

You will see us clearing blockages in rivers, cutting grass on flood embankments, and keeping our structures tidy and in good working order.

You can find out what we are doing and when we plan to do it by visiting:

<https://environment.data.gov.uk/asset-management/index.html>

## Maintenance In Your Area

You can see on the map where we are working on the rivers near you. We have planned the following maintenance:

### Targeted Tree Works

Sometimes we need to remove part or all of a tree when it leans into a river or falls over completely. This is because they can slow water flow causing flooding upstream or debris can cause blockages downstream.

Fish and eels use branches and roots in the water for habitat and breeding. Trees also provide shade that keeps water temperatures steady and prevents too much weed growing.

We remove as little of the tree as possible whilst making sure we are still preventing flooding.

### Weed Cutting

River weed is cut in specific locations to help water flow. This can help prevent flooding.

We cut weed in a meandering pattern that follows the natural path of the river. This creates a clear way for water to flow and leaves habitat.

Amphibious machines and machines working from the bank are used for this work.



**We carefully remove blockages from rivers to prevent flooding and avoid disturbing wildlife.**

## Contact Us

Feel free to contact us if you have comments or questions about our work or would like one of our officers to share our work with your community group.

Norfolk Asset Performance Team

Environment Agency, Dragonfly House, 2 Gilders Way, Norwich, Norfolk NR3 1UB

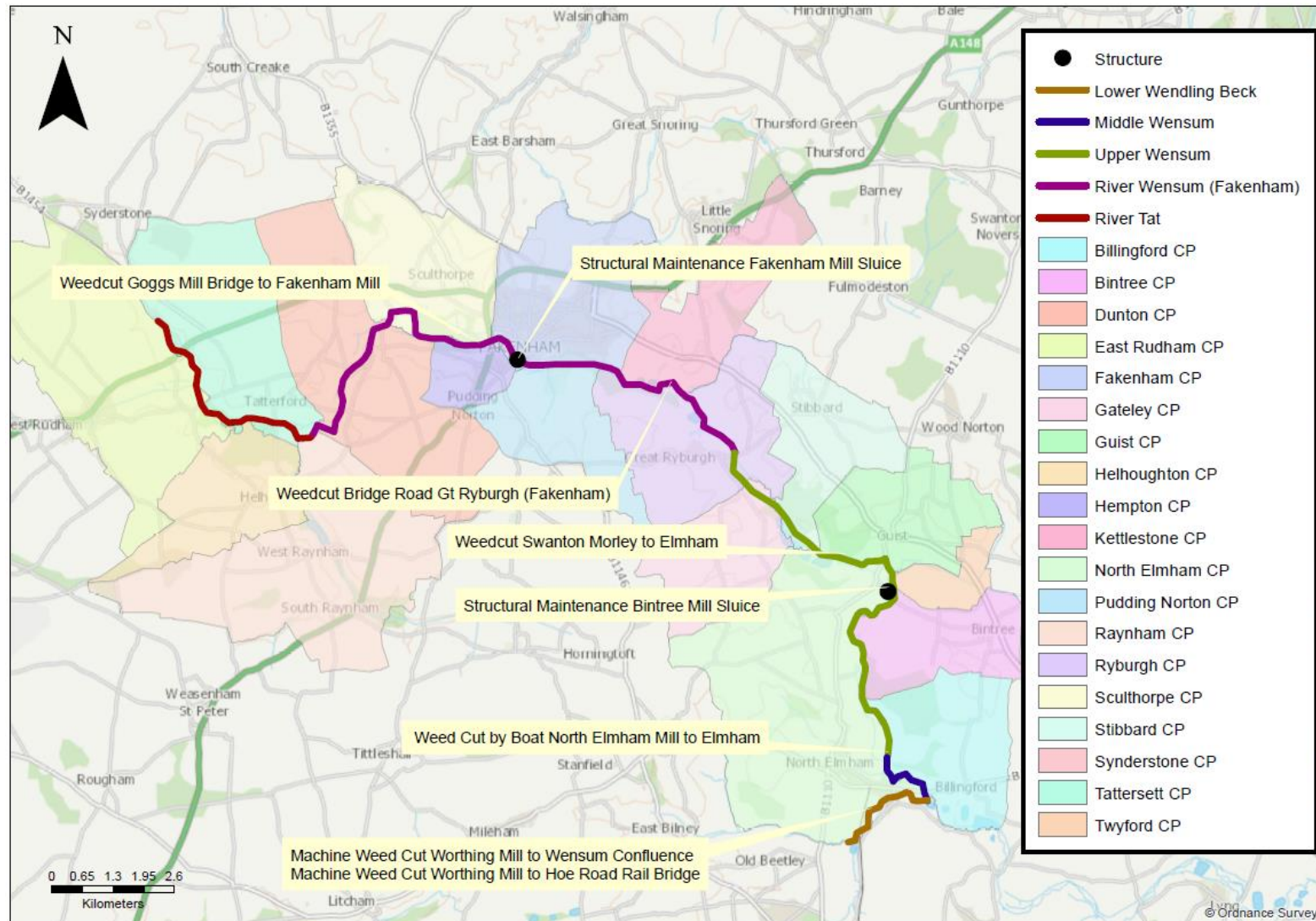
[apnorfolk@environment-agency.gov.uk](mailto:apnorfolk@environment-agency.gov.uk)

020302 55460

customer service line  
03708 506 506

incident hotline  
0800 80 70 60

floodline  
03459 88 11 88



© Environment Agency copyright and/or database rights 2022. © Ordnance Survey copyright and/or database rights 2022. All rights reserved.